

ID #: 401

Owner: City of Bartlesville, Johnstone Park

Circumference: 156 inches

Height: 96.7 feet

Average Crown Spread: 66.5 feet

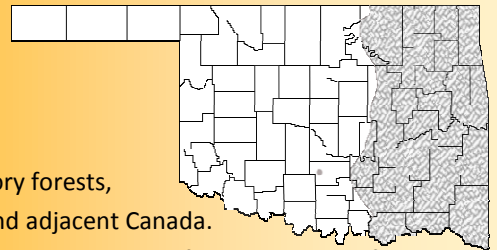
Total Points: 266.3

Geocache Code: GC5APP6

This giant has been our Champion white ash since 2005. The picture doesn't do it credit! Listed in Bartlesville's Centennial Tree Guide, this tree is estimated to be over 200 years old.



WHITE ASH (*Fraxinus americana*)



Common in moist soil of valleys and uplands in flood plain, white oak and oak-hickory forests, especially on limestone, eastern 1/3 of Oklahoma. Widespread in eastern 1/2 of U.S. and adjacent Canada.

Zone 3. White ash is the most important ash native in the U.S., also a popular shade tree. The trees are fast growing and form sprouts from stumps. Principal commercial uses: athletic goods (esp. baseball bats), furniture, flooring, millwork, paneling, vehicle parts, handles and hand tools, barrels, and boxes / crates. Fuelwood.

Medium-sized to large tree 60 ft high, with straight trunk 1.5 ft in diameter and with conical or rounded dense crown of whitish green foliage. **Twigs** stout, gray or brown, mostly hairless; leaf-scares raised, crescent-shape with side bud in notch at tip. **Buds** rounded, dark brown, finely hairy, with 2—4 pairs of scales.

Leaves paired or opposite, pinnately compound, 8—12 inches long. Leaflets 5—9, usually 7, paired except at end, short-stalked, ovate or elliptical, 2.5—5 inches long, 1.25—2.5 inches wide, long-pointed, rounded at base almost without teeth or finely saw-toothed, dark green and hairless above, beneath whitish and sometimes hairy, turning purple or yellow in autumn.

Flowers many in small branched clusters on twigs before leaves in early spring, tiny, purplish, without corolla, male and female on different trees.

Fruits many keys (samaras) hanging in clusters, reverse lance-shaped, 1—2 inches long, with narrow wing blunt or notched at tip and not extending down cylindrical thick body, maturing in late summer.

Bark dark gray, thick, with deep diamond-shaped furrows and narrow forking ridges.

Wood gray brown with thick whitish sapwood, ring porous, uneven-textured, heavy, hard, strong, stiff.